



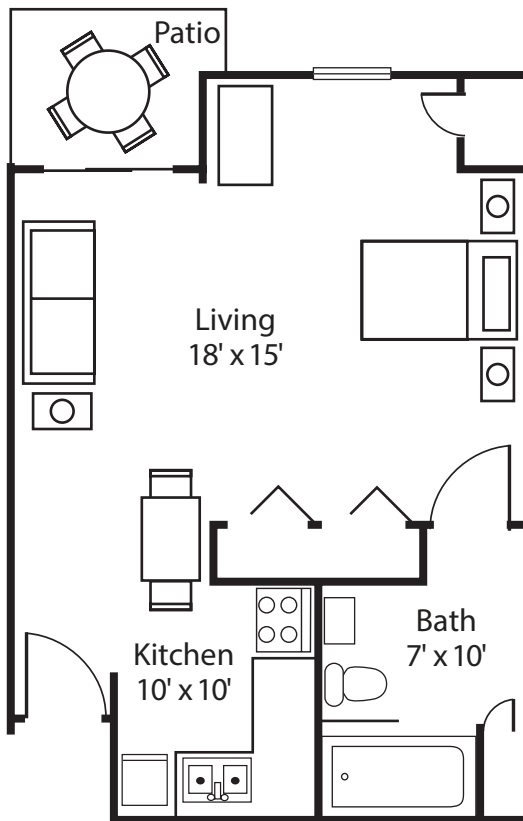
# Autumn Leaves

A LIFE CARE SERVICES® COMMUNITY

INDEPENDENT LIVING

## The Juniper

Efficiency 486sq. ft.



Date \_\_\_\_\_ Apartment # \_\_\_\_\_

Community Fee \$ \_\_\_\_\_

Other \$ \_\_\_\_\_

Total \$ \_\_\_\_\_

Monthly Fee \$ \_\_\_\_\_

2nd Person Fee \$ \_\_\_\_\_

Total Monthly Fee \$ \_\_\_\_\_

Prices subject to change without notice.

1010 Emerald Isle Drive, Dallas, TX 75218 • P (214) 328-4161 • F (214) 319-9184 • [AutumnLeavesLCS.com](http://AutumnLeavesLCS.com)



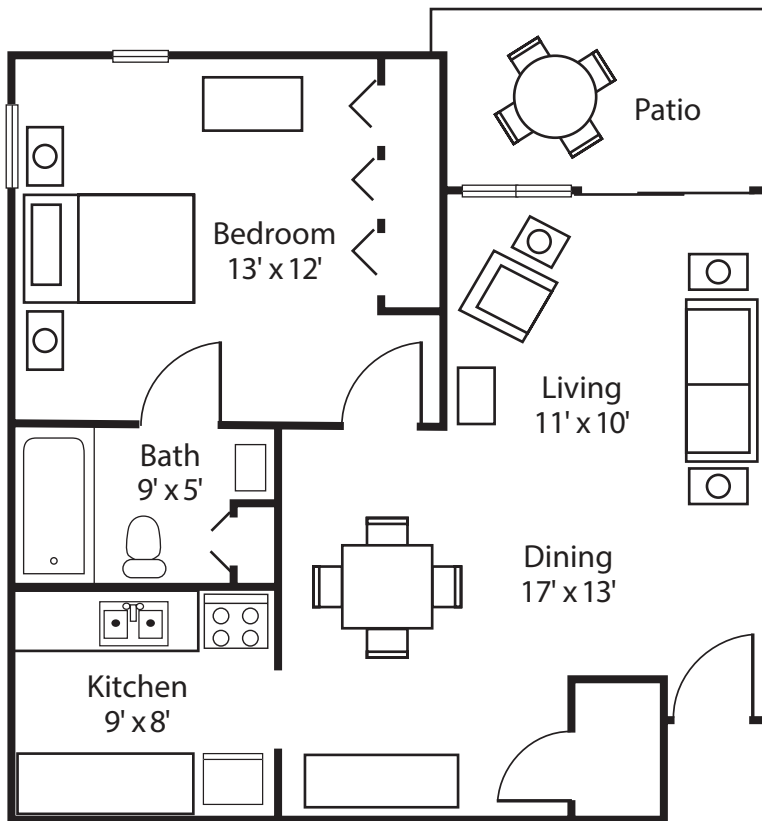
# Autumn Leaves

A LIFE CARE SERVICES® COMMUNITY

INDEPENDENT LIVING

## The Magnolia

One Bedroom 626 sq. ft.



Date \_\_\_\_\_ Apartment # \_\_\_\_\_

Community Fee \$ \_\_\_\_\_

Other \$ \_\_\_\_\_

Total \$ \_\_\_\_\_

Monthly Fee \$ \_\_\_\_\_

2nd Person Fee \$ \_\_\_\_\_

Total Monthly Fee \$ \_\_\_\_\_

Prices subject to change without notice.

1010 Emerald Isle Drive, Dallas, TX 75218 • P (214) 328-4161 • F (214) 319-9184 • [AutumnLeavesLCS.com](http://AutumnLeavesLCS.com)



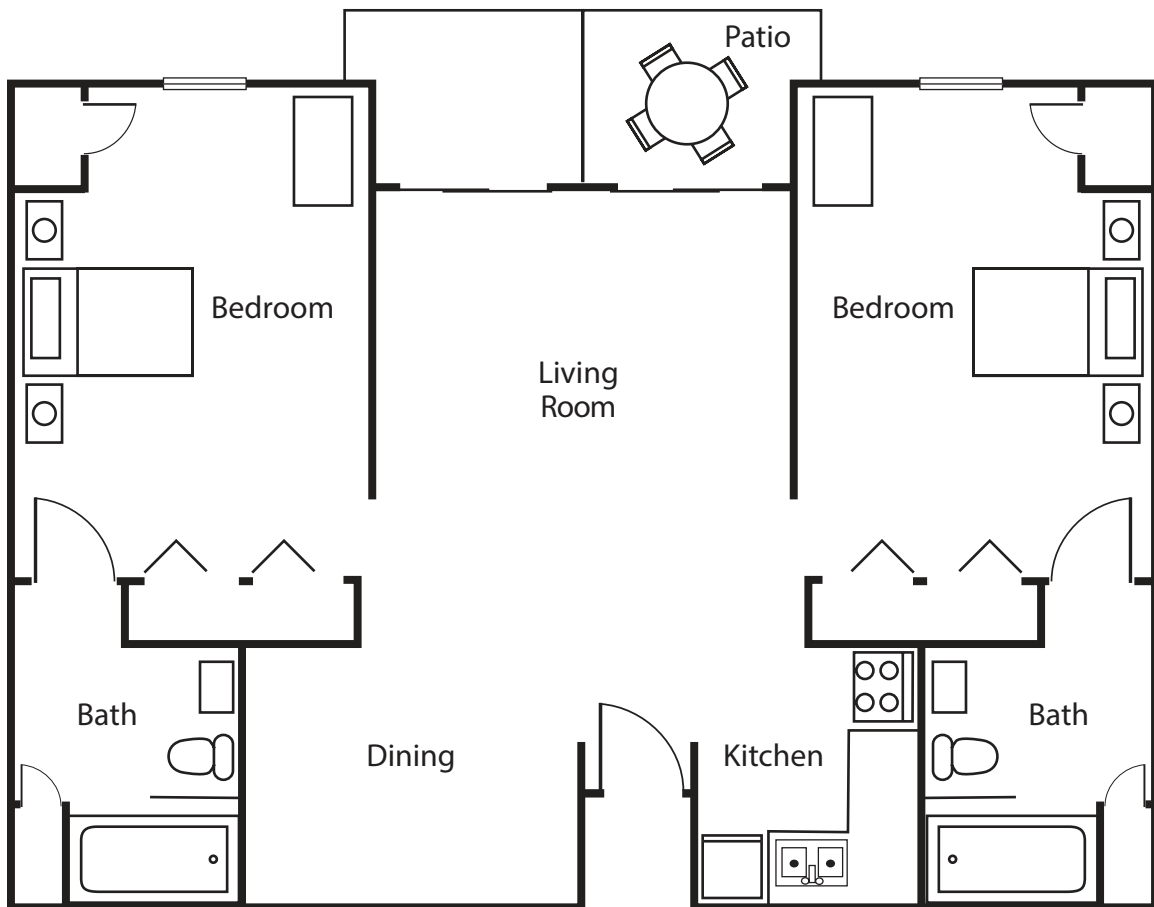
# Autumn Leaves

A LIFE CARE SERVICES® COMMUNITY

INDEPENDENT LIVING

## The Hawthorn

Two Bedroom 972 sq. ft.



Date \_\_\_\_\_ Apartment # \_\_\_\_\_

Community Fee \$ \_\_\_\_\_

Other \$ \_\_\_\_\_

Total \$ \_\_\_\_\_

Monthly Fee \$ \_\_\_\_\_

2nd Person Fee \$ \_\_\_\_\_

Total Monthly Fee \$ \_\_\_\_\_

Prices subject to change without notice.

1010 Emerald Isle Drive, Dallas, TX 75218 • P (214) 328-4161 • F (214) 319-9184 • [AutumnLeavesLCS.com](http://AutumnLeavesLCS.com)